



TROPICAL STORM CRISTOBAL

10:45 AM CDT

Wednesday, June 3, 2020

Prepared by: Lance Wood - WFO Houston/Galveston

Situation Overview

Tropical Storm Cristobal



Houston/Galveston
WEATHER FORECAST OFFICE



- No significant change to the forecast.
- The storm is expected to begin to move northward toward the center of the Gulf on Friday or Friday night.
- It is still too early to have confidence in a specific track or intensity but residents along the northern Gulf Coast should monitor closely for the possibility of impacts late in the weekend and into early next week.

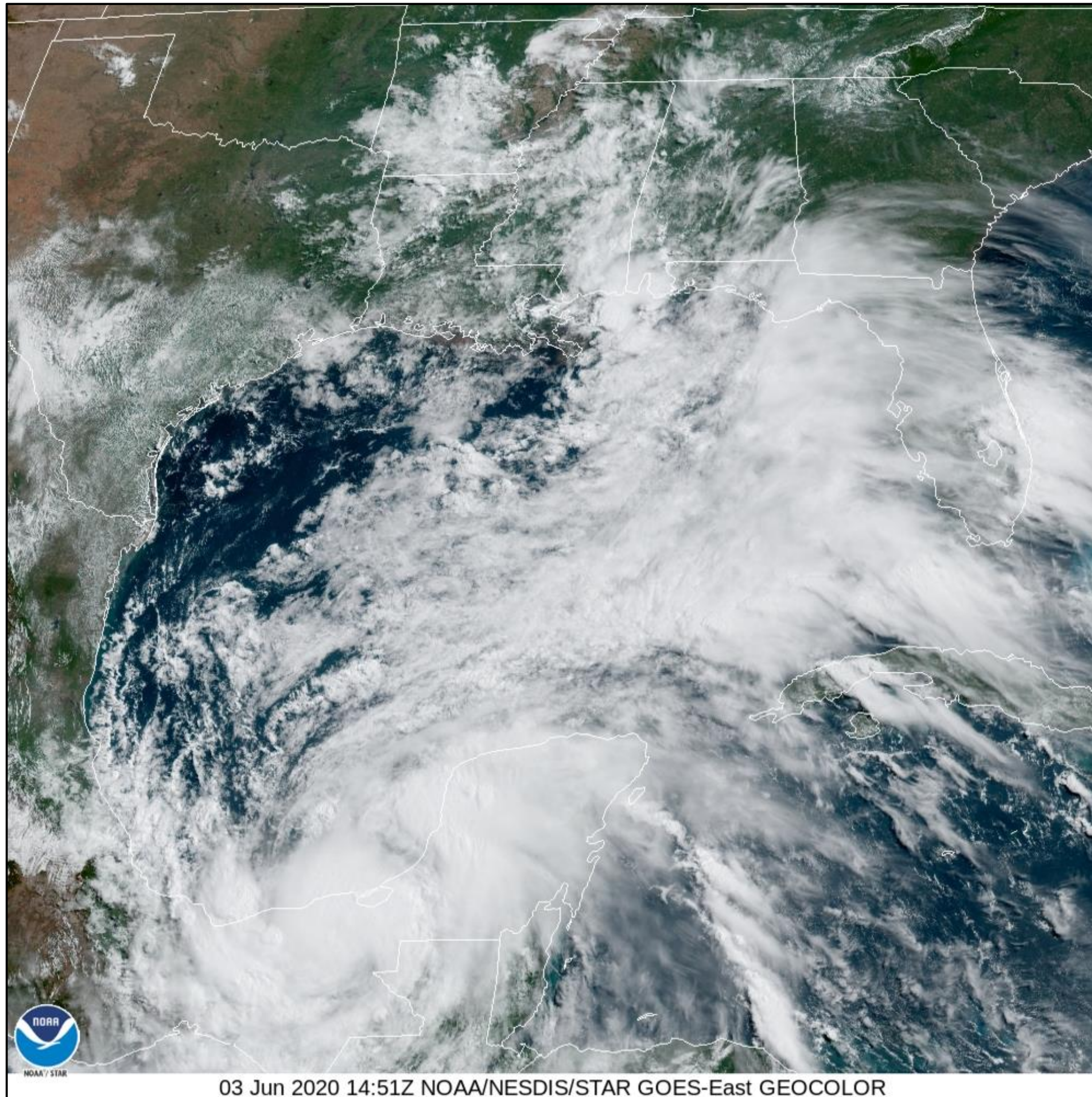
NOTE: Do not focus on the exact track. Impacts can occur well outside the area enclosed by the cone.

Current Satellite View

Tropical Storm Cristobal



Houston/Galveston
WEATHER FORECAST OFFICE



03 Jun 2020 14:51Z NOAA/NESDIS/STAR GOES-East GEOCOLOR

- TS Cristobal at 10 AM CDT:
 - Maximum Sustained Winds 60 mph
 - Movement SSE at 3 mph.
- Center located near 18.6N, 92.0W - made landfall earlier this morning along the Mexican coast.
- Should continue to drift over the Yucatan through Friday morning.

TS Wind Speed Probabilities

Tropical Storm Cristobal



Houston/Galveston
WEATHER FORECAST OFFICE



- Chance of tropical storm force winds at a point through 7 AM Monday.
- Wind impacts are not expected over the northern Gulf coast land areas until Sunday.



Potential hazard timing along the Texas coast

Seas

- Higher period swell begins showing this weekend. Possible onset of seas ≥ 6 feet within 60 NM: **Saturday.**
- Increased rip current risk this weekend.

Winds

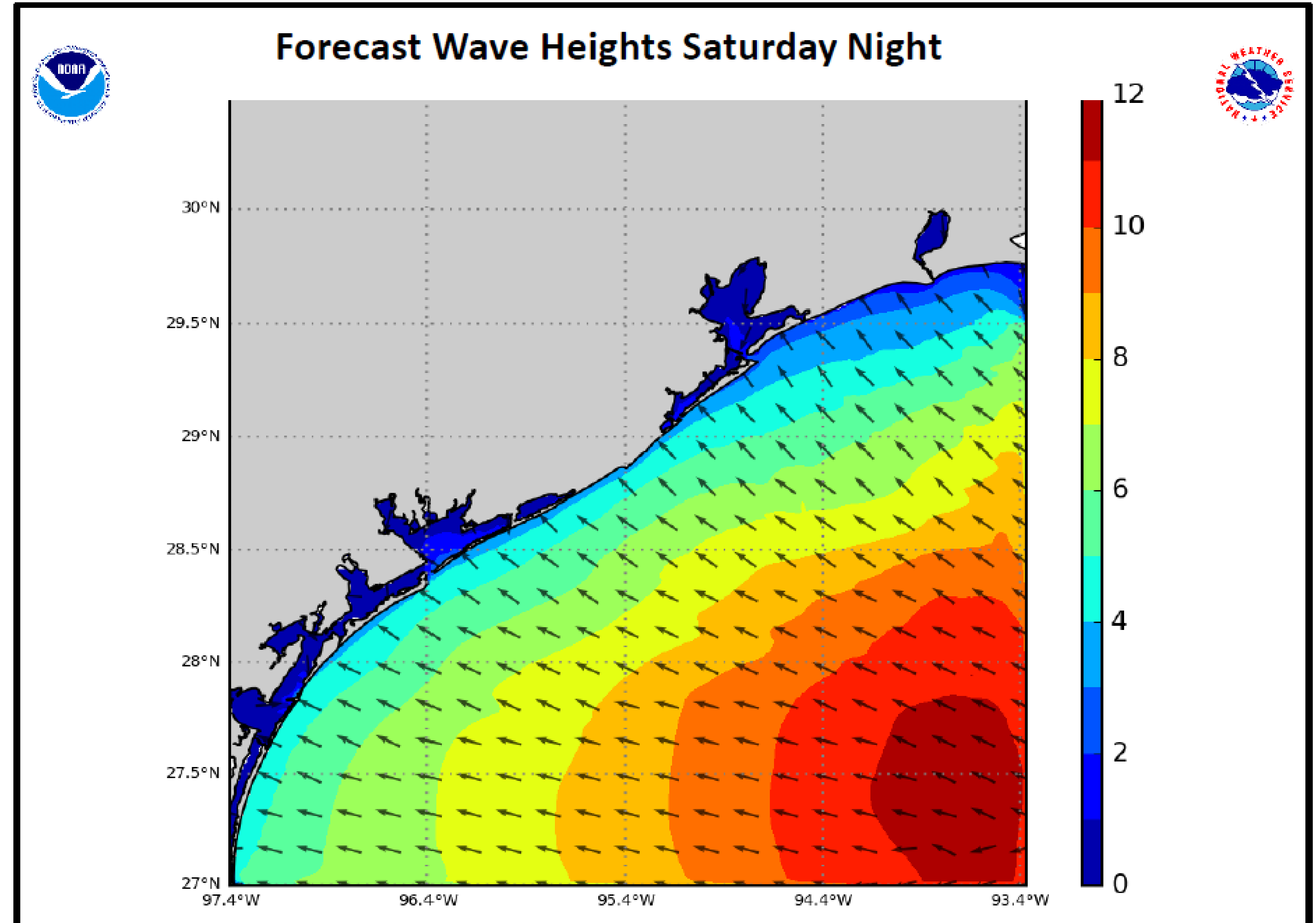
- Onset of sustained tropical storm / gale force winds within 20 NM: **Too early to say (if at all).** Based on latest forecast - late Saturday and beyond. (Louisiana waters higher risk than Texas).

Coastal flooding, surge & tides

- Onset of coastal flooding risk due to tide, surge & surf: **Too early to say (if at all).** For planning purposes – this weekend.
- Reasonable worst case storm surge: **Too early to say (if at all).**

Heat

- Locations well west of the storm will be prone to hot conditions. Be careful if working outdoors.





*The Next Advisory:
Wednesday 4:00 PM CDT*



Web: <http://weather.gov/houston>



Phone: (281)337-5074



E-mail: sr-hgx.nws@noaa.gov



Facebook: NWSHouston



Twitter: @NWSHouston



YouTube: NWSHouston

For the latest graphics and information go to: www.hurricanes.gov or weather.gov/srh/tropical?office=hgx